

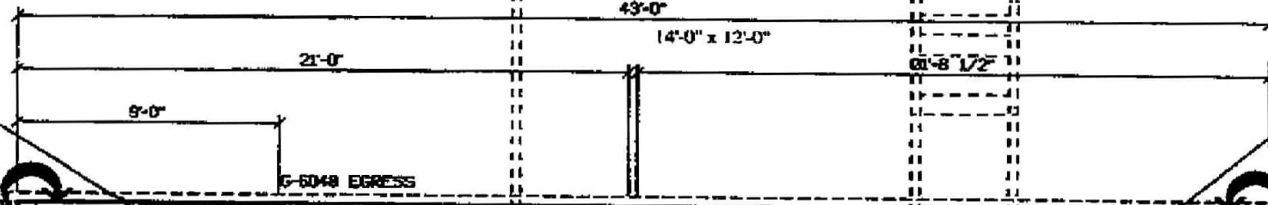


**Front Elevation**

SIXES FOUNDATION  
GRADE DECK POSTS  
24" X 24" X 8' FOOTINGS

### Treated Deck

43'-0"



8" X 3-4" CONCRETE  
8" X 16" FOOTING  
2X6 FRAMING ABOVE.

8" X 3-4" CONCRETE  
8" X 16" FOOTING  
2X6 FRAMING ABOVE.

8" X 8-0" CONCRETE  
8" X 16" FOOTING  
2X6 FRAMING ABOVE.

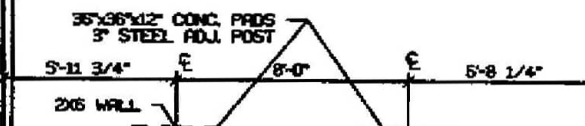
8" X 8-0" CONCRETE  
8" X 16" FOOTING  
DRAIN TILE & PERSTONE  
INTERWOVEN TO SUMP.

8" X 8-0" CONCRETE  
8" X 16" FOOTING  
DRAIN TILE & PERSTONE  
INTERWOVEN TO SUMP.

8" X 8-0" CONCRETE  
8" X 16" FOOTING  
DRAIN TILE & PERSTONE  
INTERWOVEN TO SUMP.

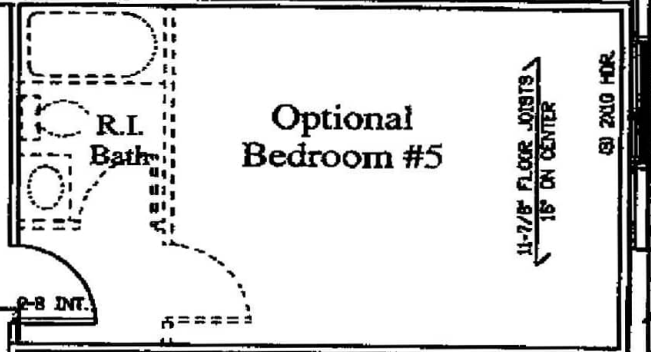
### Future Rec. Room

20'-0" X 14'-4"  
CARPET



### R.I. Bath

### Optional Bedroom #5

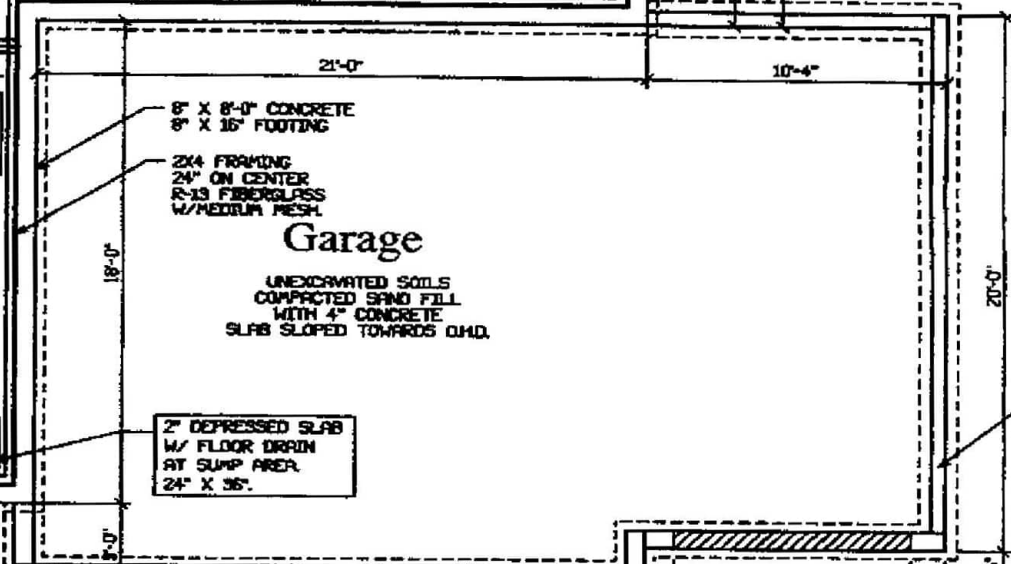


### Mech. Storage



### Garage

UNEXCAVATED SOILS  
COMPACTED SAND FILL  
WITH 4" CONCRETE  
SLAB SLOPED TOWARDS O.M.D.



HOLD BACK  
2-1/2"

6" X 4-0" CONCRETE  
8" X 16" FOOTING

SIMPSON LHTD  
ANCHOR STRAP  
EMBEDDED IN CONC.

SIMPSON LHTD  
ANCHOR STRAP  
EMBEDDED IN CONC.

8" X 4-0" CONCRETE  
8" X 16" FOOTING

8" X 4-0" CONCRETE  
8" X 16" FOOTING

